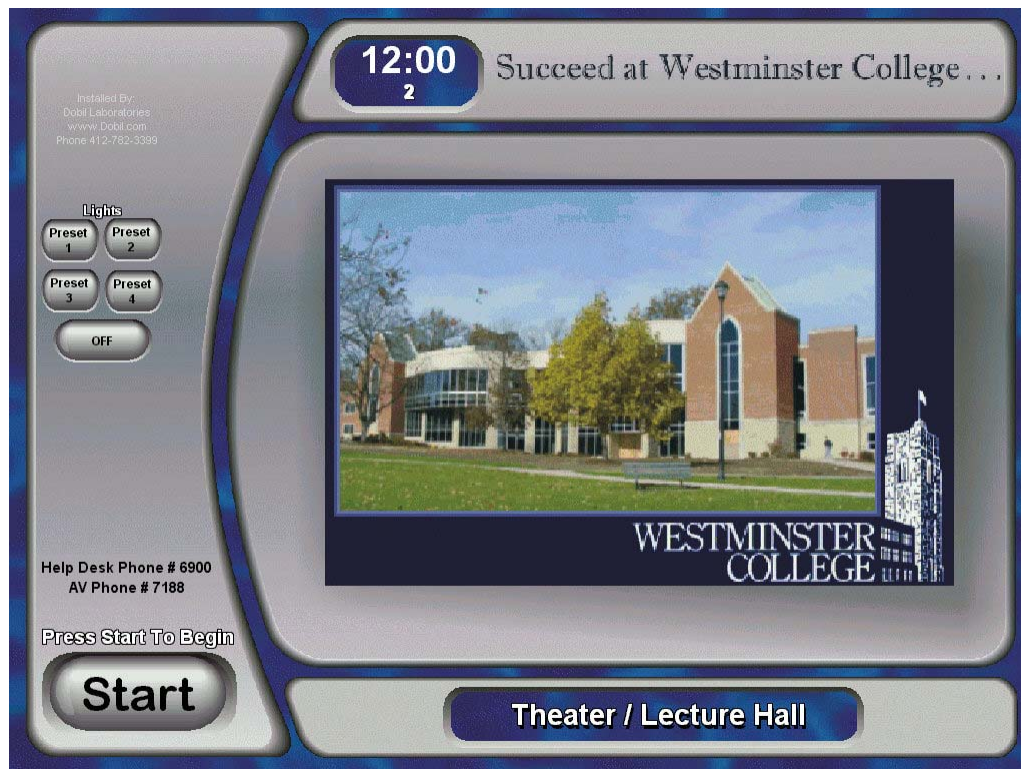


# Westminster College



## THEATRE/ LECTURE HALL Audio Visual System User Manual

Audio Visual Systems installed by Dobil Laboratories

727 Butler Street  
Pittsburgh Pa. 15223  
(412)-782-3399

## **Table of contents**

Page/ Description
-------------------

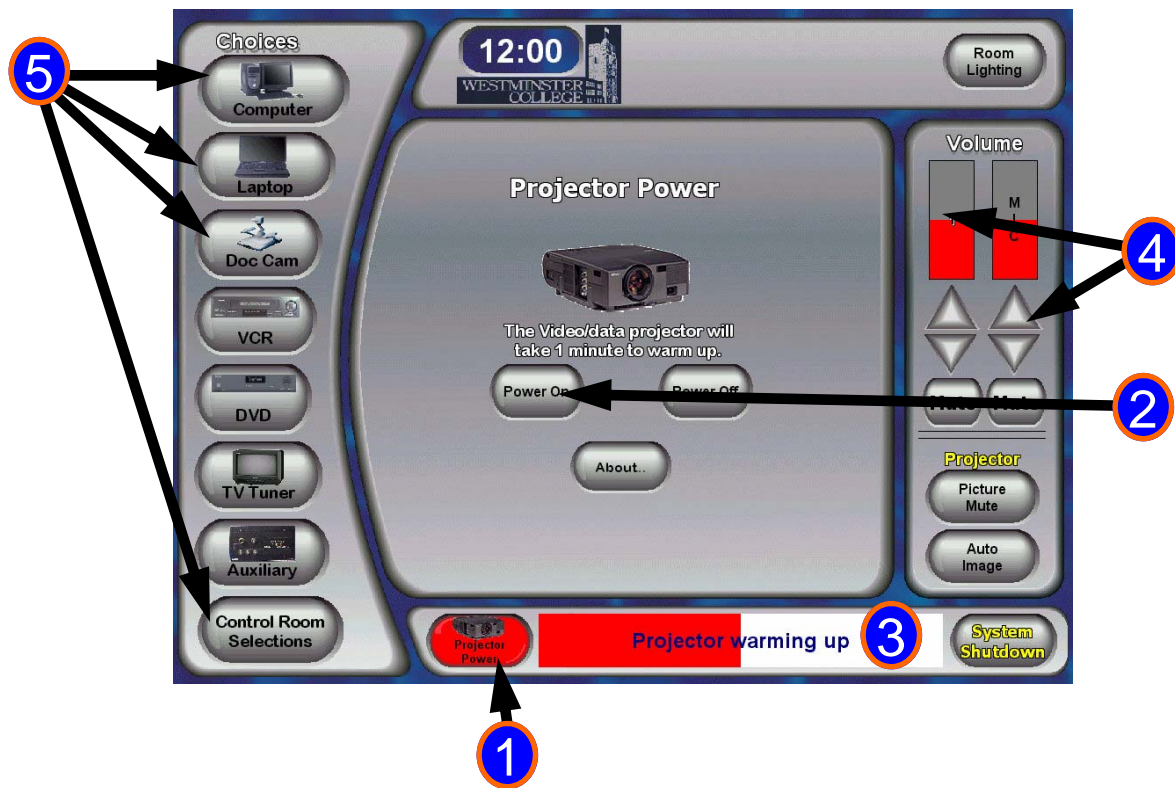
- 1. Cover.**
- 2. Table of contents.**
- 3. Welcome page.**
- 4. Opening page.**
- 5. Displaying a Computer**
- 6. Displaying a Laptop Computer**
- 7. Displaying a Document Camera**
- 8. Displaying a VCR**
- 9. Displaying a DVD**
- 10. Displaying a TV/AM/FM Tuner**
- 11. Displaying a Auxiliary Input**
- 12. Displaying the Control Room VCR**
- 13. Displaying the Control Room DVD**
- 14. Displaying the Control Room Cassette**
- 15. Displaying the Control Room CD**
- 16. Displaying the Cable 9 Feed**
- 17. Shutting down Remove Media**
- 18. Shutting the system down (end of day)**
- 19. Back to Start**

## Welcome Page



- 1 The welcome page will be the first page that appears on the touch panel. (if the panel is blacked out, just touch it to reveal this page). Press the “START” button to turn the audio / visual system.
- 2 Room Lighting can be controlled here.
- 3 Enter Your Password Number Here. Press Enter When Complete. If password is entered correctly, the audio system will turn on and Touch Panel will reveal the main control page.

## Opening Page Projector power page



1 The **projector power** button brings up the projector power page. This is the first page you will see after hitting the "Start " button on the welcome page.

2 Press the "**Power on**" Button to turn on the Projector.

A **bar graph** will show you the status of the projector warm up process.

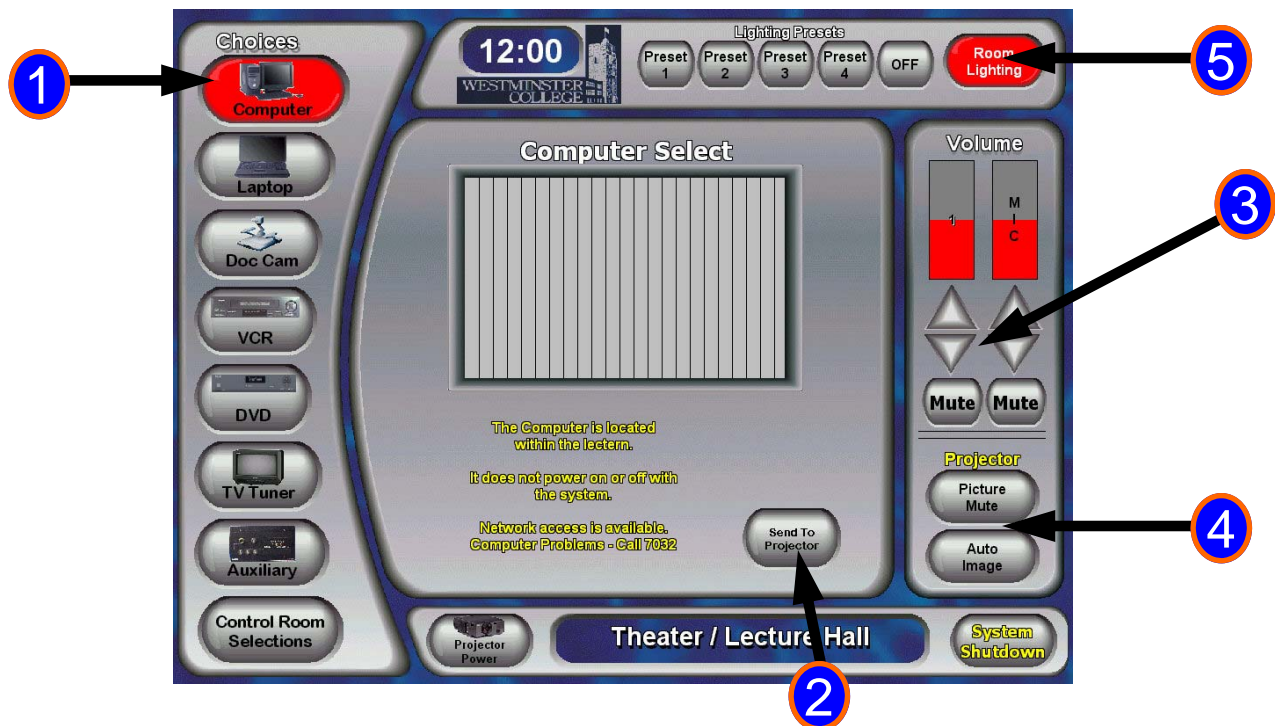
3 It takes 40 seconds for the projector to warm up. Please wait for the projector to warm up before you proceed.

4 The **Volume** can be controlled here. One Bar Graph is for all microphone volume control. The other bar graph will control the sources Selected such as VCR, DVD, ect.

5 The group of **Choices** are selections available to you. These selections can be displayed on the screen or broadcast through the speakers.

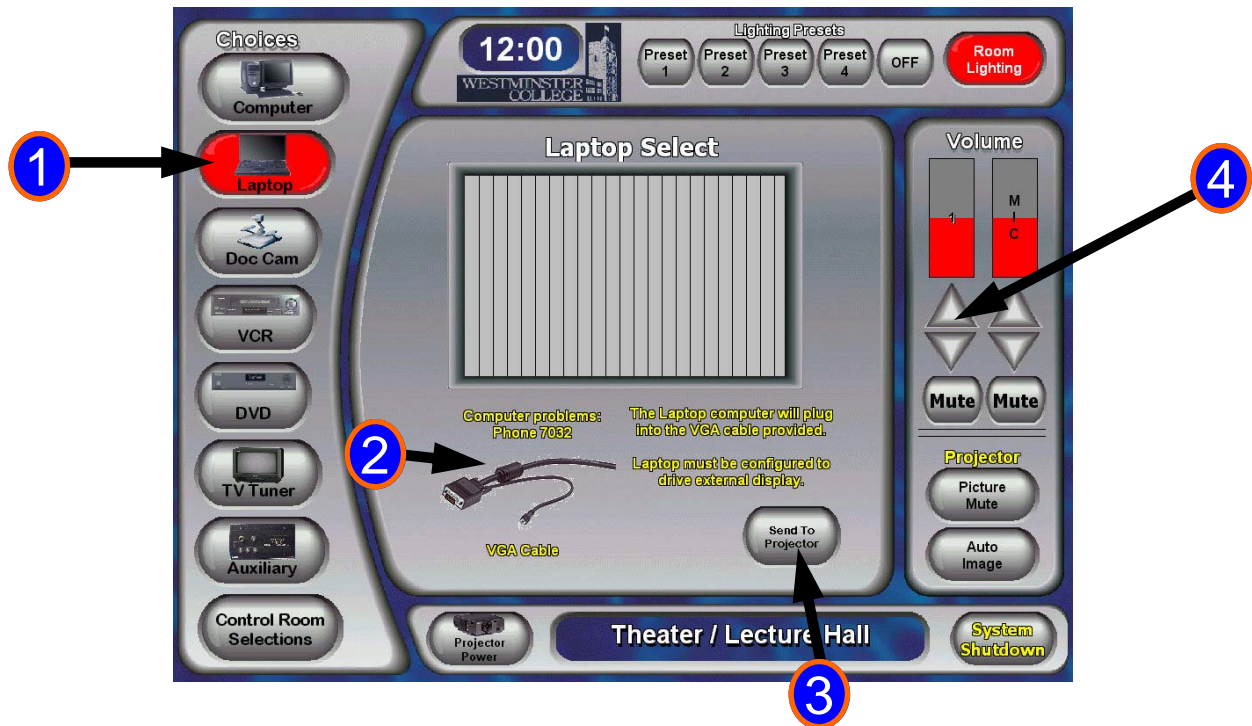


# Displaying a Computer



- 1 The **Computer** button brings up the Computer page.
- 2 Next you need to send the Pc's image to the video projection screen. Press "**Send to Projector**" to send the Computer to the screen, The PC audio will also be sent to the speakers.
- 3 The Pc's volume can be controlled here.
- 4 Press **Picture Mute** To hide the image on the screen. Press it again to reveal the image. **Auto Image** is used to put the PC or Laptop image at optimum location on the screen.
- 5 Room Lighting can be controlled here.

# Displaying a Laptop Computer



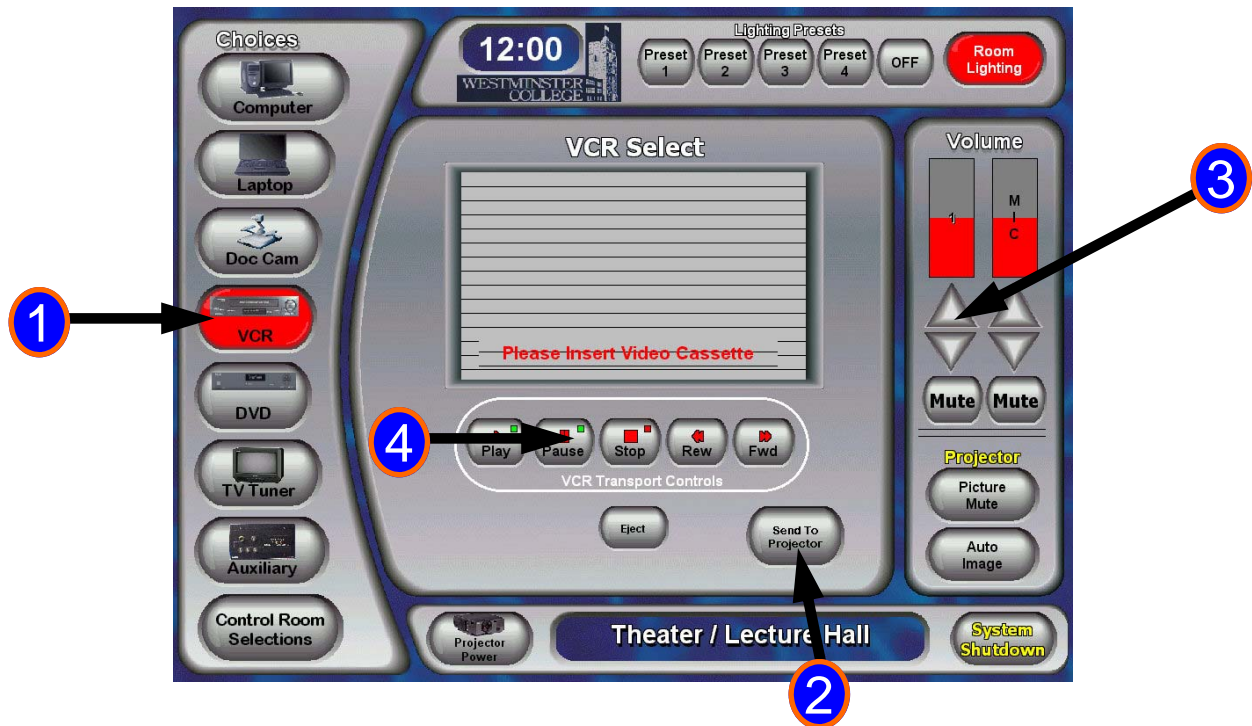
- 1 The **Laptop** button brings up the Laptop page.
- 2 Just plug in your laptop with the supplied VGA Cable.
- 3 Next you need to send the **Laptop's** image to the video projection screen. Press "**Send to Projector**" to send the Computer to the screen, The **Laptop's** audio will also be sent to the speakers.
- 4 The laptop's volume will be controlled here.

# Displaying a Document Camera



- 1 The **Doc Cam** button brings up the Document Camera page.
- 2 Next you need to send the **Document Camera's** image to the video projection screen. Press "**Send to Projector**" to send the **Document Camera** to the screen, *For Background Music*, The **PC's** audio will also be sent to the speakers.
- 3 The Pc's volume can be controlled here.

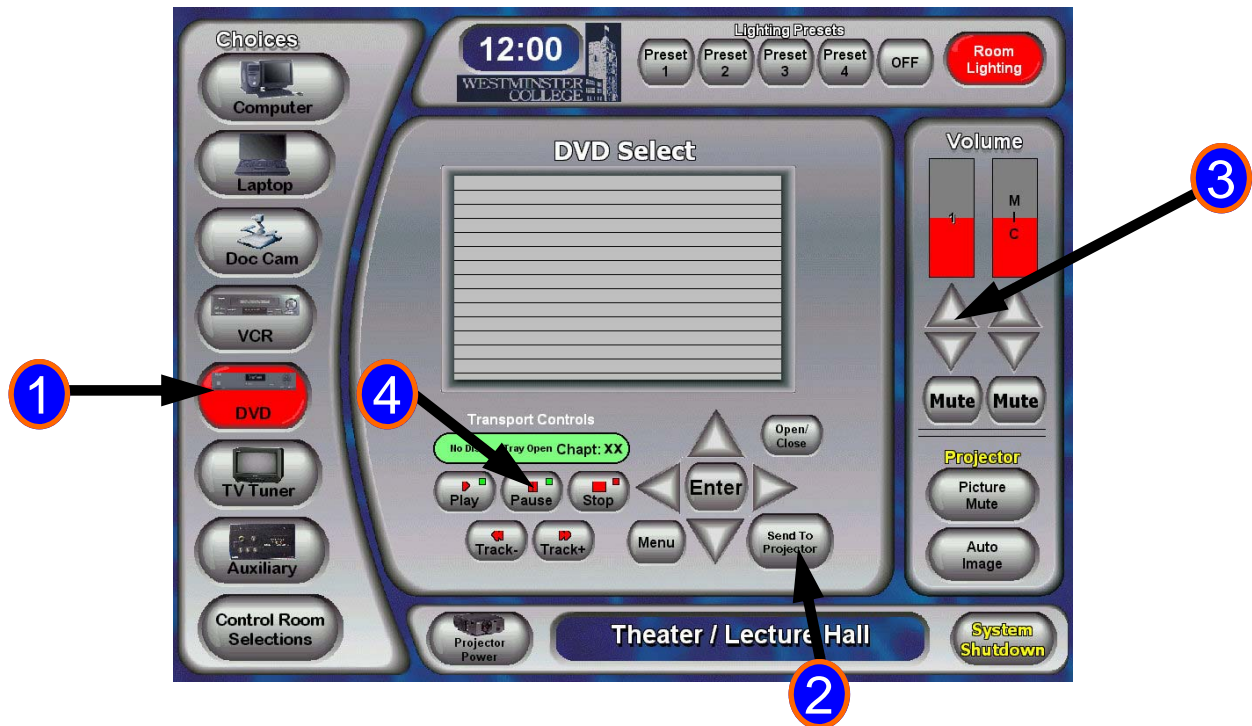
# Displaying a VCR



- 1 The **VCR** button brings up the VCR page.
- 2 Next you need to send the **VCR's** image to the video projection screen. Press "**Send to Projector**" to send the **VCR** to the screen, The **VCR's** audio will also be sent to the speakers.
- 3 The **VCR's** volume can be controlled here.
- 4 You can control the VCR here. It works just like your remote at home.

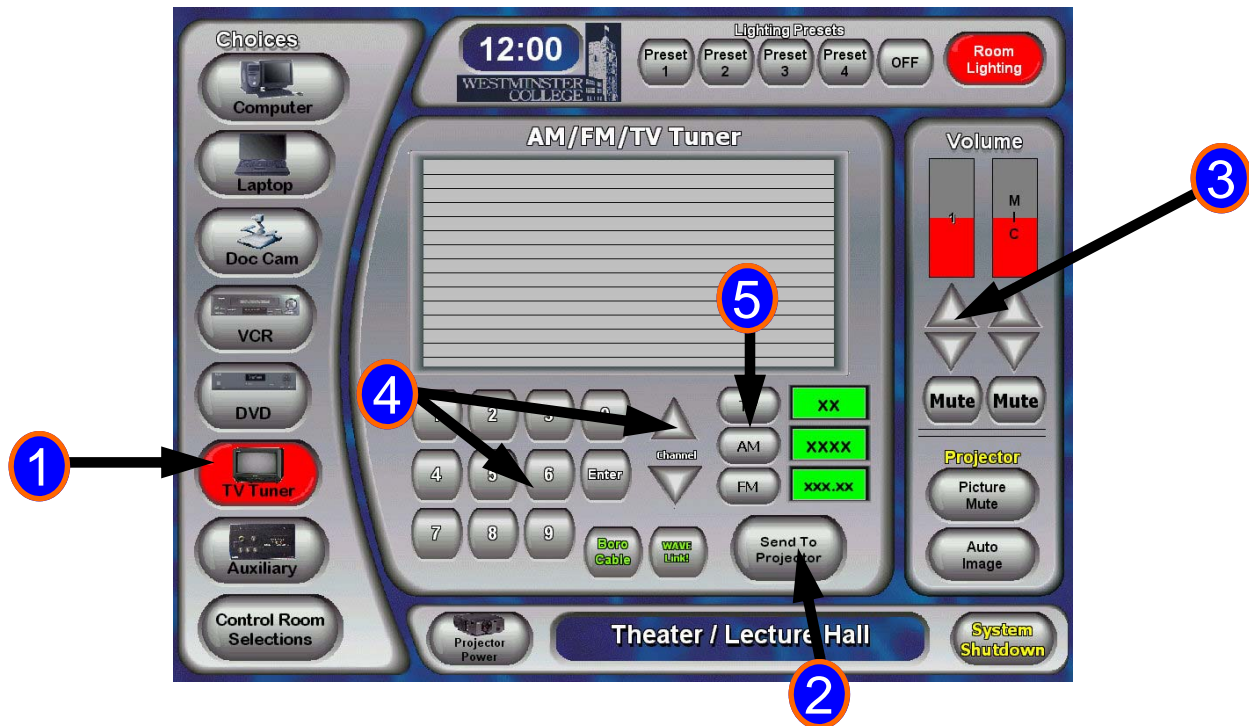


# Displaying a DVD



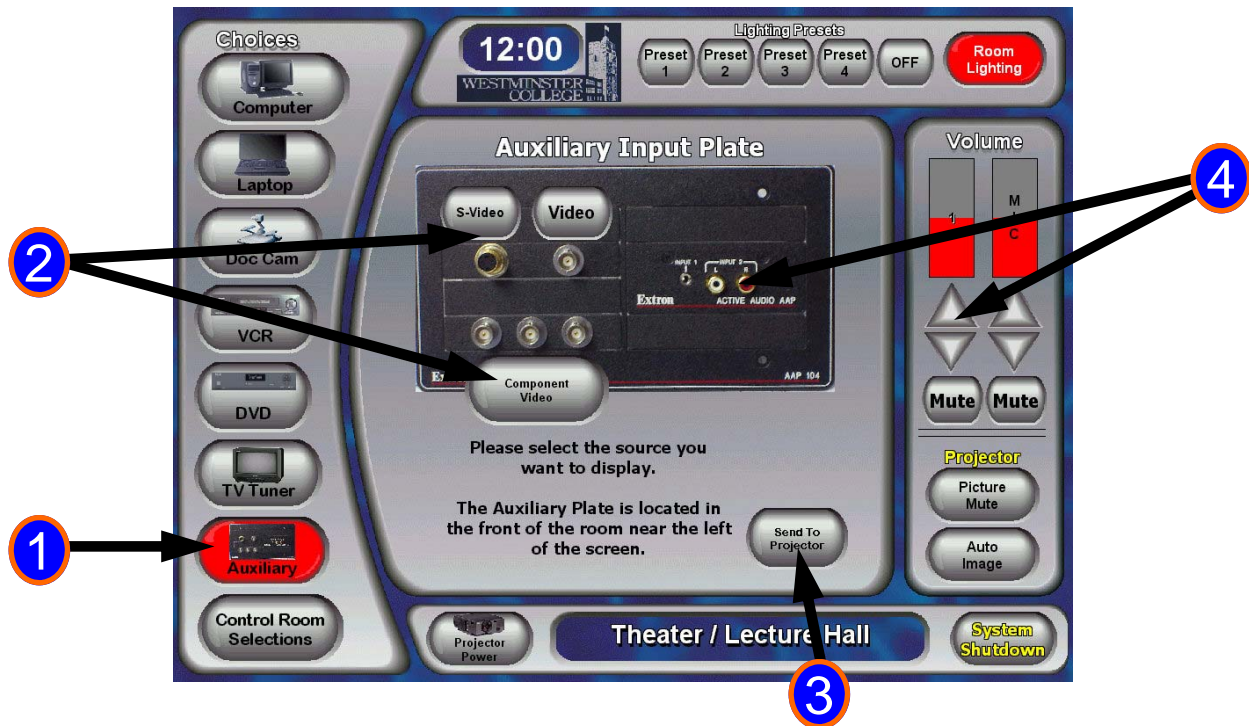
- 1 The **DVD** button brings up the DVD page.
- 2 Next you need to send the **DVD's** image to the video projection screen. Press "**Send to Projector**" to send the **DVD** to the screen, The **DVD's** audio will also be sent to the speakers.
- 3 The **DVD's** volume can be controlled here.
- 4 You can control the **DVD** here. It works just like your remote at home.

## Displaying AM/FM/TV



- 1 The **TV Tuner** button brings up the AM/FM/TV Tuner page.
- 2 Next you need to send the **Tuner's** image to the video projection screen. Press "**Send to Projector**" to send the **Tuner video** to the screen, The **Tuner's** audio will also be sent to the speakers. If the tuner is in AM or FM Mode no image will be displayed.
- 3 The **Tuner's** volume can be controlled here.
- 4 You can control the **Tuner** here. You can tune with channel up and down. Or you can directly enter the channel you want.
- 5 Press **AM**, **FM**, or **TV** to select the desired band of signal.

# Displaying an Auxiliary Source



- 1 The **Auxiliary** button brings up the **Auxiliary Input** page.
- 2 You then need to connect your device to one of the available inputs on the wall-plate located below the screen. After connected you need to select the corresponding input selection, **Video**, **S-Video**, or **Component Video**.
- 3 Next you need to send the **Auxiliary Input's** image to the video projection screen. Press "**Send to Projector**" to send the **Auxiliary Input** to the screen, The **Auxiliary Input** audio will also be sent to the speakers.
- 4 The **Auxiliary Input** volume can be controlled here. You can connect an audio source here.

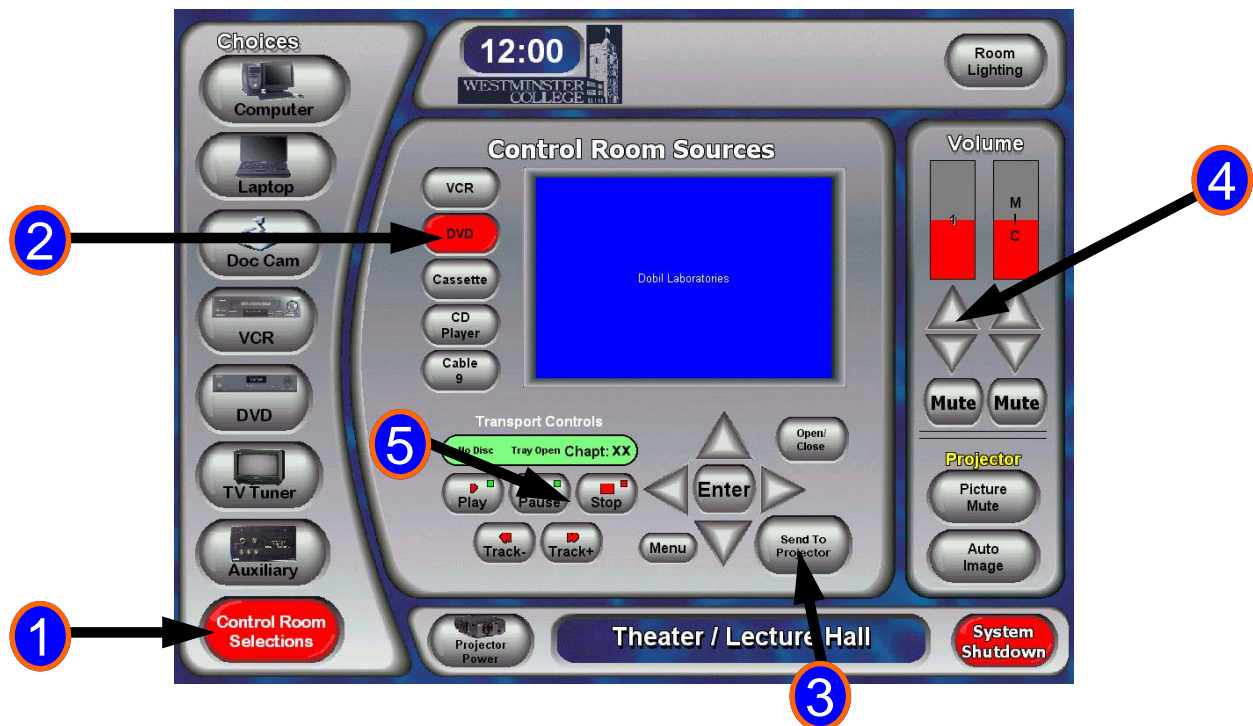
# Control Room VCR



- 1 The **Control Room Selections** button brings up the Control Room Sources page.
- 2 Select the **VCR** button here to use the Control Room VCR.
- 3 Next you need to send the **Control Room VCR's** image to the video projection screen. Press "**Send to Projector**" to send the **VCR** to the screen, The **Control Room VCR** audio will also be sent to the speakers.
- 4 The **Control Room VCR's** volume can be controlled here.
- 5 You can control the Control Room VCR here. It works just like your remote at home.

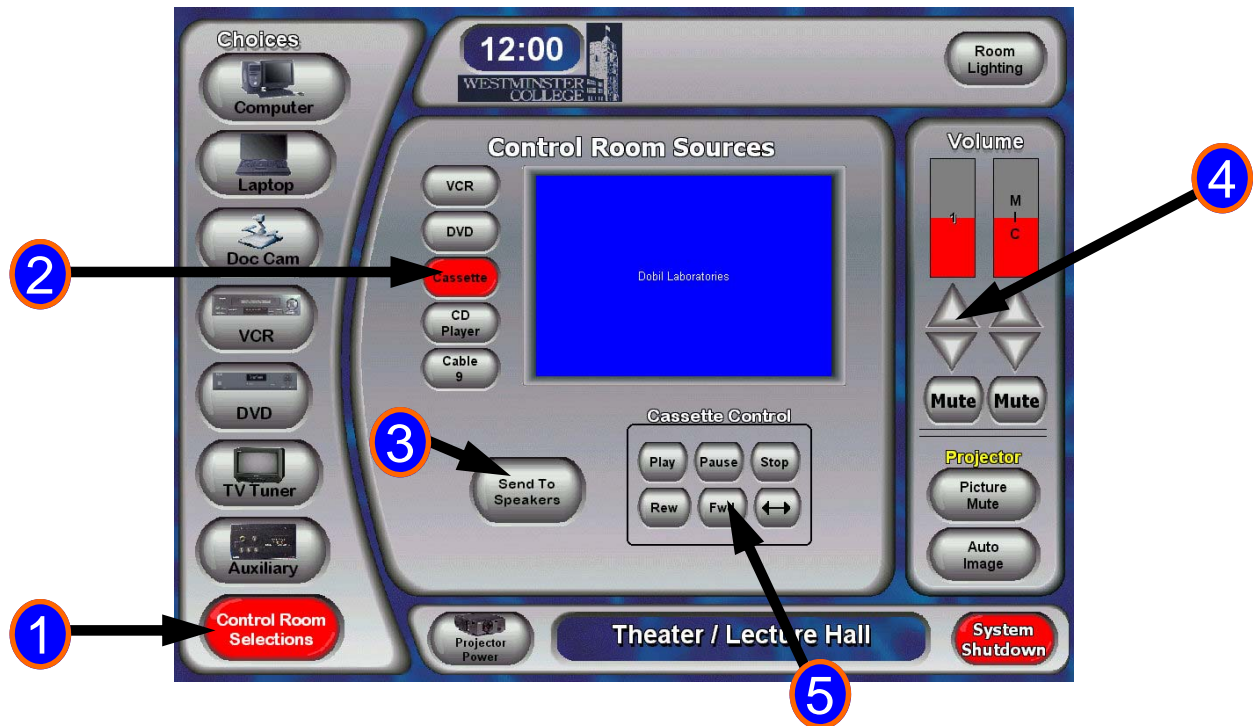


# Control Room DVD



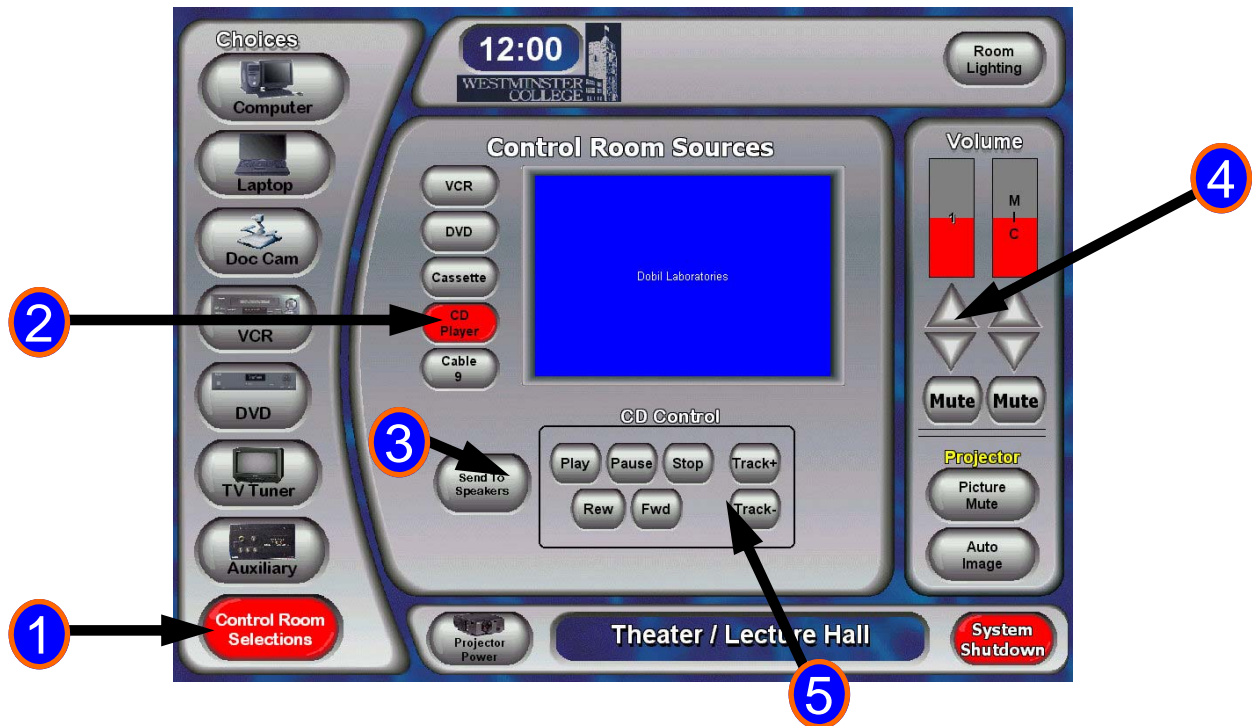
- 1 The **Control Room Selections** button brings up the Control Room Sources page.
- 2 Select the **DVD** button here to use the Control Room DVD.
- 3 Next you need to send the **Control Room DVD's** image to the video projection screen. Press "**Send to Projector**" to send the **DVD** to the screen, The **Control Room DVD** audio will also be sent to the speakers.
- 4 The **Control Room DVD's** volume can be controlled here.
- 5 You can control the Control Room DVD here. It works just like your remote at home.

# Control Room Cassette



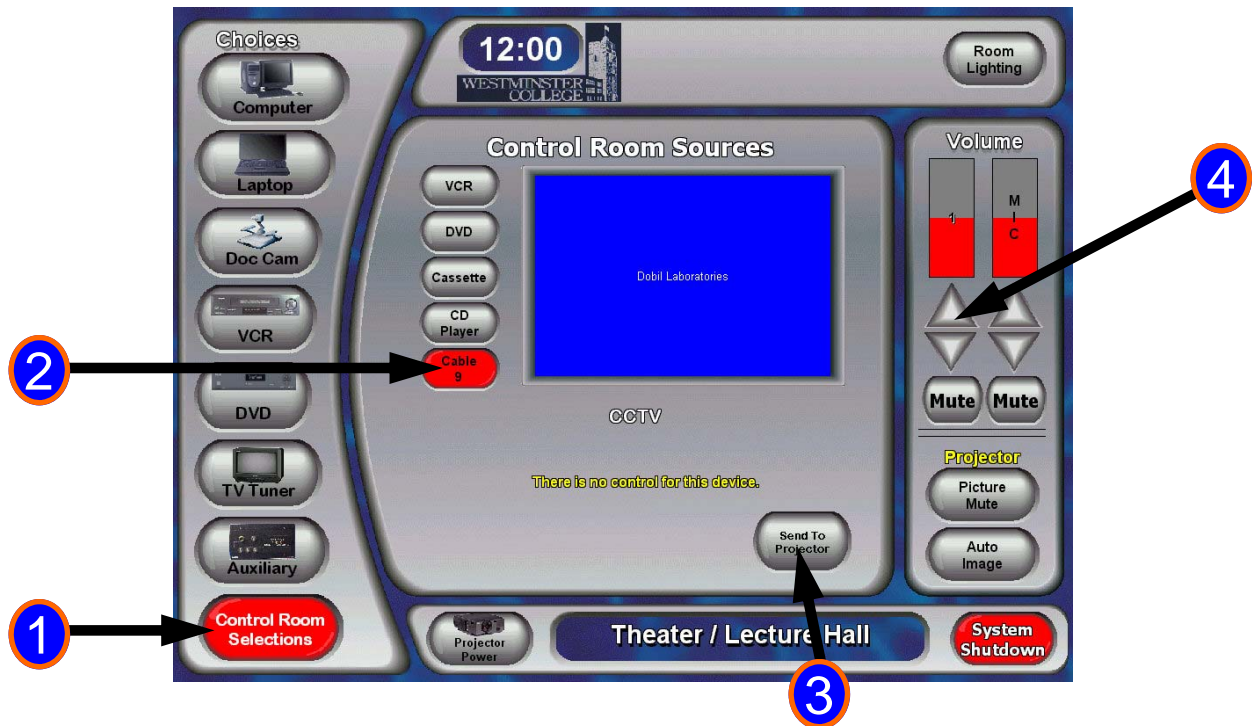
- 1 The **Control Room Selections** button brings up the Control Room Sources page.
- 2 Select the **Cassette** button here to use the Control Room Cassette.
- 3 Next you need to send the **Control Room Cassette** audio to the sound system. Press "**Send to Speakers**" to send the **Cassette** to the speakers.
- 4 The **Control Room Cassette** volume can be controlled here.
- 5 You can control the Control Room Cassette here.

# Control Room CD



- 1 The **Control Room Selections** button brings up the Control Room Sources page.
- 2 Select the **CD** button here to use the Control Room Cassette.
- 3 Next you need to send the **Control Room CD** audio to the sound system. Press **"Send to Speakers"** to send the **CD** to the speakers.
- 4 The **Control Room CD** volume can be controlled here.
- 5 You can control the Control Room CD here.

## Control Room Cable9

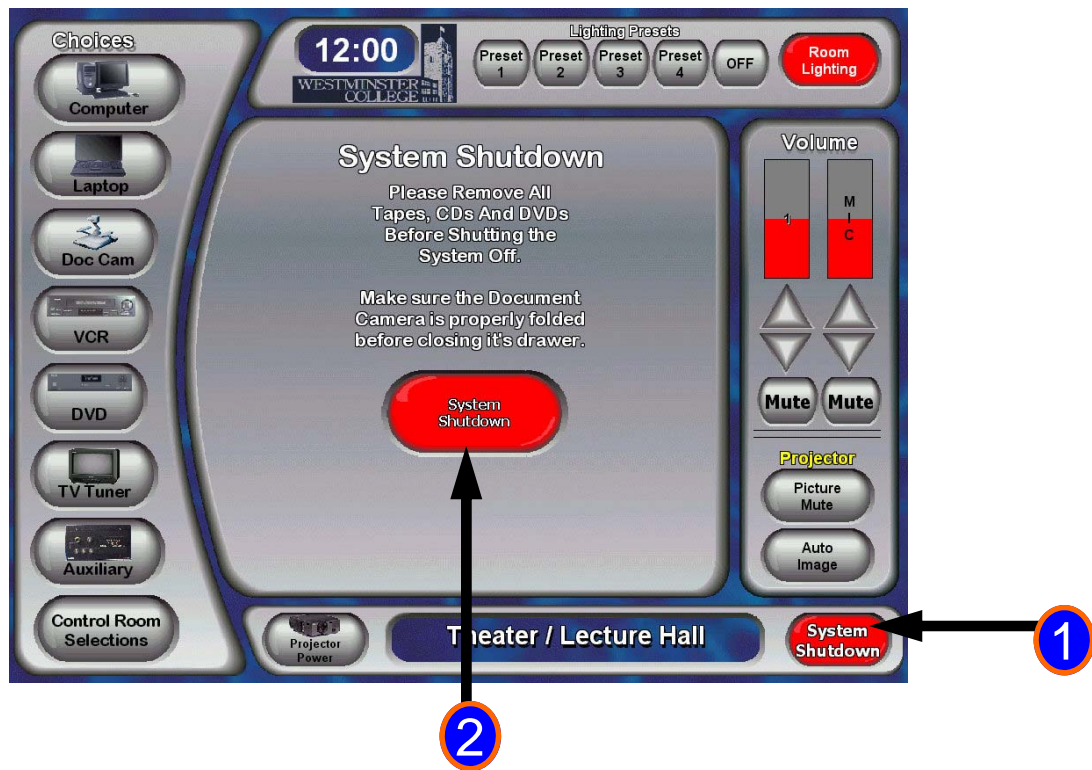


- 1 The **Control Room Selections** button brings up the Control Room Sources page.
- 2 Select the **Cable 9** button here to use the Cable 9 Source.
- 3 Next you need to send **Cable 9's** image to the video projection screen. Press "**Send to Projector**" to send the **Cable 9** to the screen, **Cable 9** audio will also be sent to the speakers.
- 4 The **Cable 9's** volume can be controlled here.

**Cable 9** is a Closed Circuit cable feed throughout the center. The content of this source is setup by others.

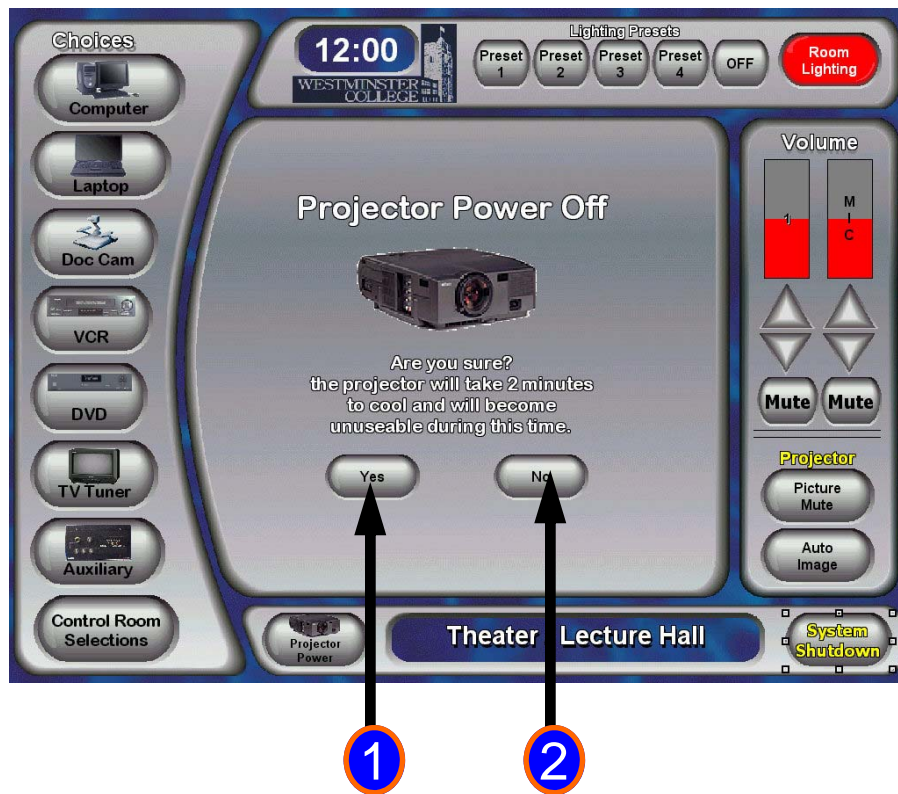


## Shutting the system down (end of day)



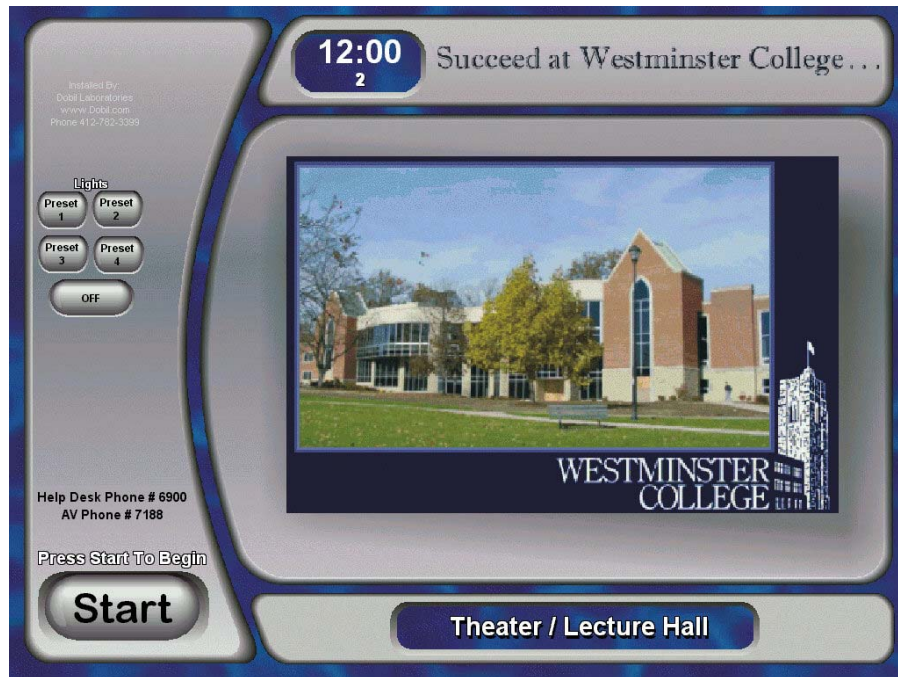
- 1 Press the **System Shutdown** button when you are finished using the system.
- 2 Press the next **System Shutdown** after you have removed all media and are ready to proceed with shutdown.

## Shutting the system down (end of day)



- 1 The projector power page will ask you if you are sure. It takes 2 minutes for the projector to cool off and will be un useable during this time. Press **“Yes”** to shut the system down. After pressing “yes” the Welcome Page will be displayed.
- 2 Press **“No”** to go back.

## Back to Start



1

The welcome page will be displayed after shutting down the system.